

@HHOLDERNESS

@HHOLDERNESS



H. HOLDERNESS

MADE IN ENGLAND



OUR STORY

H. HOLDERNESS WAS FOUNDED TRYING TO SOLVE A PROBLEM.

IN THE FRENCH ALPS DURING THE WINTER OF 2016/17, FOUNDER, HENRIETTA, NOTICED THAT THERE WAS A DISPARITY IN THE LEGGINGS WOMEN WERE CHOOSING TO WEAR UNDER THEIR SKI TROUSERS, AND THE THERMAL UNDERWEAR THAT WAS DESIGNED TO PERFORM IN EXTREME WEATHER CONDITIONS.

TIME AFTER TIME, SHE SAW WOMEN REACH FOR THEIR BEAUTIFULLY PATTERNED GYM LEGGINGS INSTEAD OF THEIR FUNCTIONAL WOOLY THERMALS, BECAUSE THEY WANTED TO WEAR AESTHETICALLY PLEASING LEGGINGS THAT THEY FELT COMFORTABLE WEARING FROM BREAKFAST TO BED, RATHER THAN UNATTRACTIVE, WOOLY THERMALS. THE PROBLEM BEING, GYM LEGGINGS LOOK NICE, BUT WITH THEIR EXTRA FEATURES THAT MAKE THEM IDEAL FOR THE GYM, SUCH AS PANELLING, ZIPS AND POCKETS, THEY ARE BOTH UNSUITABLE FOR MOUNTAIN CLIMATES AND ARE UNCOMFORTABLE TO WEAR UNDER SKI TROUSERS.

UNWILLING TO SACRIFICE EITHER TECHNICAL PERFORMANCE NOR STYLE, HENRIETTA FOUNDED H. HOLDERNESS WITH THE DESIRE TO CREATE PRODUCTS THAT COMBINED THE BEST OF BOTH OPTIONS. BASE-LAYERS WITH THE TECHNICAL CAPACITIES OF TRADITIONAL WOOLLEN THERMALS, WITH THE AESTHETIC FINESSE AND STYLE OF MODERN GYM LEGGINGS. THE RESULT BEING, THERMAL BASE-LAYERS THAT PERFORM ON THE SKI SLOPES AND LOOK GOOD ENOUGH TO SHOW OFF POST-PISTE: IN THE CHALET, RESTAURANTS AND MOUNTAIN BARS. GIVING WOMEN THE CONFIDENCE TO WEAR THEIR BASE-LAYERS BEFORE, DURING AND AFTER THEIR DAY ON THE SLOPES, NOT JUST WHEN HIDDEN UNDER THEIR SKI TROUSERS.

WE COMBINE THE FUNCTIONALITY OF WOOLLEN THERMALS WITH THE AESTHETICS OF GYM LEGGINGS TO PRODUCE THERMAL BASE-LAYERS THAT PERFORMS ON THE SKI SLOPES AND LOOKS GOOD ENOUGH TO SHOW OFF APRÈS.

A PRODUCT CREATED FOR WOMEN, BY WOMEN

WE WANTED TO PUT INTO THE SKI MARKET A PRODUCT THAT WAS DESIGNED FOR WOMEN, BY WOMEN. BASE-LAYERS THAT INSPIRED CONFIDENCE RATHER THAN THE 'OH THAT WILL DO' APPROACH OF THE WOMEN'S SKI COLLECTIONS OF MANY SKI BRANDS AND THE SKI MARKET IN GENERAL.

THE WINTER SPORTS INDUSTRY IS A BOYS CLUB. BE IT A BIT MORE SCRUFFY AND SUNTANNED THAN THE CITY BANKER EQUIVANT IN LONDON. WE CHALLENGE YOU TO GO INTO A SKI BOUTIQUE AND CAST AN EYE OVER THE MEN'S KIT VERSUS WHAT'S AVAILABLE FOR WOMEN. WE GUARANTEE YOU'LL SEE HIGH PERFORMANCE SKI BOOTS, SERIOUSLY TECHNICAL JACKETS AND HIGH QUALITY GOOGLES ENDORSED BY MALE WINTER SPORTS ATHLETES. IN THE WOMEN'S SECTION AND YOU'LL SEE FLUFFY LINED BOOTS THAT ARE DISTINCTLY MEDIOCRE PERFORMANCE-WISE, LOTS OF TIGHT-BUM HUGGING, FLARE STYLE SALOPETTES (OKAY, THESE LOOK BEAUTIFUL BUT THE MAJORITY AREN'T EVEN WATERPROOF) AND MAYBE SOME PRETTY PINK POLES. WHILST WE ARE ALL IN FAVOUR OF A WELL CURATED SKI ENSEMBLE, WHY SHOULD WOMEN HAVE TO SACRIFICE PERFORMANCE IN FAVOUR OF STYLE?

WE'RE HERE TO OFFER WOMEN TECHNICAL APPAREL THAT SACRIFICES NEITHER PERFORMANCE NOR STYLE AND STANDS UP TO THE BOY'S CORNER. WE KNOW WE CAN HIT THE SKI SLOPES JUST AS WELL AS THE BOYS CAN (AND PROBABLY WITH MORE FINESSE) SO WHY SHOULDN'T OUR KIT REFLECT THAT?



base-layer:

the first layer of clothing, designed to sit snug against the skin, trapping a thin layer of warm air and keeping the wearer warm in the mountains.

WINTER WEIGHT BASE-LAYERS



BELLECÔTE LONG SLEEVE TOP
CODE: BTOP8/10/12/14
+ BELLECÔTE LEGGINGS
CODE: BELLEG8/10/12/14

CONTACT INFO:

HENRIETTA@HHOLDERNESS.COM | +44 (0) 7767753824

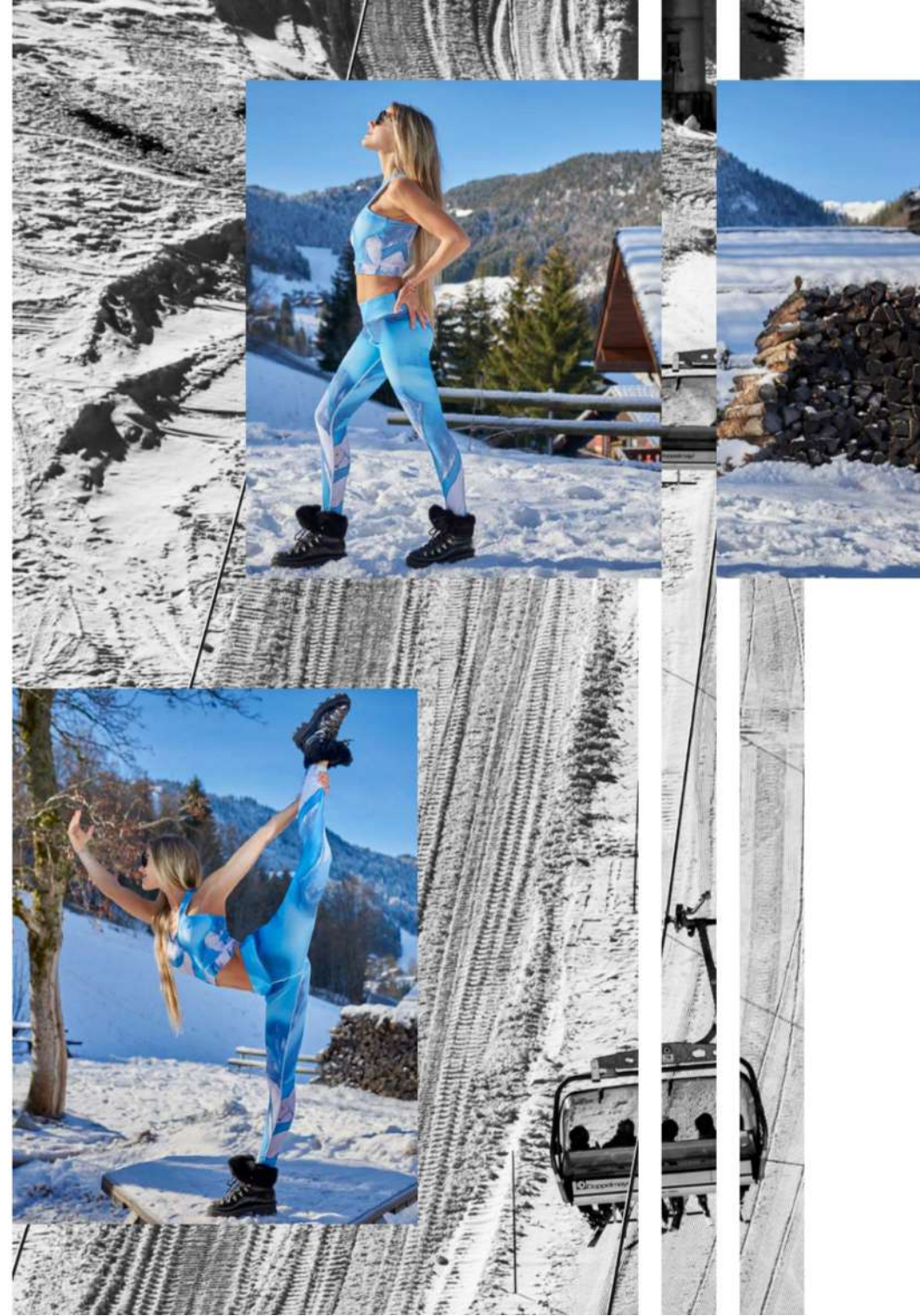


GLACIER LONG SLEEVE TOP
CODE: GTOP8/10/12/14
+ GLACIER LEGGINGS
CODE: GLEG8/10/12/14

CONTACT INFO:

HENRIETTA@HHOLDERNESS.COM | +44 (0) 7767753824

THE CREUX SPORTS BRA
210GSM/82% POLYESTER/18% ELASTANE BLEND
210GSM/ 82% POLYESTER/ 18% MÉLANGE ÉLASTHANNE



THE CREUX SPORTS BRA +
CODE: CREUX8/10/12/14
NEW ZEALAND WINTER WEIGHT LEGGINGS
CODE: NZWINTER8/10/12/14

CONTACT INFO:
HENRIETTA@HHOLDERNESS.COM | +44 (0) 7767753824

SPRING WEIGHT BASE-LAYERS

ROSE LEGGINGS
CODE: ROSE8/10/12/14



NEW ZEALAND LEGGINGS
CODE: NZSPRING8/10/12/14



CONTACT INFO:

HENRIETTA@HHOLDERNESS.COM | +44 (0) 7767753824

OUR SOFT-BRUSHED INTERIORS



OUR WINTER WEIGHT BASE-LAYERS FEATURE A SOFT-BRUSHED INTERIOR TO SIT SOFTLY AGAINST THE SKIN AND TO ADD AN EXTRA LAYER OF PROTECTION AGAINST THE WINTER CHILL.



CONTACT INFO:

HENRIETTA@HHOLDERNESS.COM | +44 (0) 7767753824

BASE-LAYER TOPS



BELLECÔTE LONGSLEEVE TOP

SKU: BTOP

MATERIAL: 85% PL, 15% EA

FABRIC WEIGHT: WINTER WEIGHT

SIZES: XS-XXL

RRP: £80

- ❄️ THERMAL INSULATING
- 🦠 ANTI-BACTERIAL
- 🛋️ SOFT BRUSHED INTERIOR
- 🧶 'BARELY THERE' SEAM SYSTEM
- 🌀 BREATHABLE
- 📏 4-WAY STRETCH
- 🛡️ DURABLE
- 🧺 MACHINE WASHABLE
- ☀️ LIGHTWEIGHT
- 👉 ANTI-WRINKLE



GLACIER LONGSLEEVE TOP

SKU: GTOP

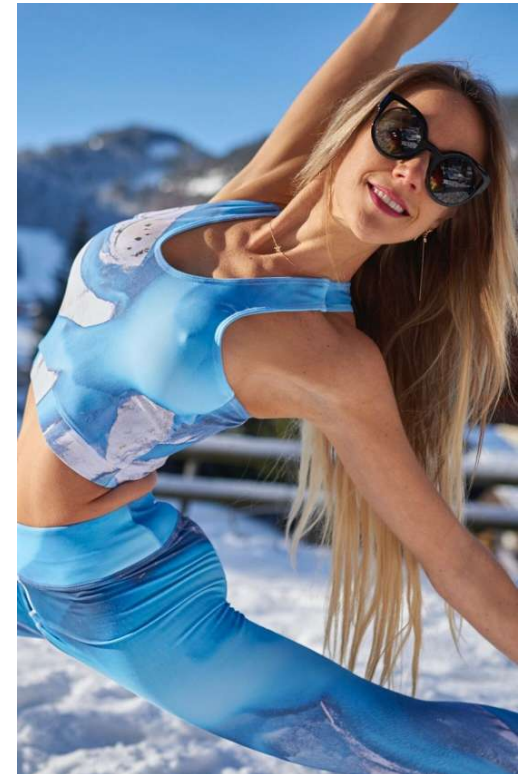
MATERIAL: 85% PL, 15% EA

FABRIC WEIGHT: WINTER WEIGHT

SIZES: XS-XXL

RETAIL PRICE: £80

- ❄️ THERMAL INSULATING
- 🦠 ANTI-BACTERIAL
- 🛋️ SOFT BRUSHED INTERIOR
- 🧶 'BARELY THERE' SEAM SYSTEM
- 🌀 BREATHABLE
- 📏 4-WAY STRETCH
- 🛡️ DURABLE
- 🧺 MACHINE WASHABLE
- ☀️ LIGHTWEIGHT
- 👉 ANTI-WRINKLE



THE CREUX LONGLINE BRA

SKU: CREUX

MATERIAL: 82% PL, 18% EA

SIZES: XS-XXL

FABRIC WEIGHT: SPRING WEIGHT

RRP: £42

- ☀️ UV PROTECTIVE
- 🧶 'BARELY THERE' SEAM SYSTEM
- 🌀 BREATHABLE
- 📏 4-WAY STRETCH
- 🛡️ DURABLE
- 🧺 MACHINE WASHABLE
- ☀️ LIGHTWEIGHT
- 👉 ANTI-WRINKLE

CONTACT INFO:

HENRIETTA@HHOLDERNESS.COM | +44 (0) 7767753824

BASE-LAYER LEGGINGS



BELLECÔTE LEGGINGS

SKU: BLEG

MATERIAL: 85% PL, 15% EA

FABRIC WEIGHT: WINTER WEIGHT

SIZES: XS-XXL

RRP: £75

- ❄️ THERMAL INSULATING
- ⊗ ANTI-BACTERIAL
- 🛋️ SOFT BRUSHED INTERIOR
- 🧶 'BARELY THERE' SEAM SYSTEM
- 🌀 BREATHABLE
- 🔄 4-WAY STRETCH
- 🛡️ DURABLE
- 🧺 MACHINE WASHABLE
- ☁️ LIGHTWEIGHT
- 🌊 ANTI-WRINKLE



GLACIER LEGGINGS

SKU: GLEG

MATERIAL: 85% PL, 15% EA

FABRIC WEIGHT: WINTER WEIGHT

SIZES: XS-XXL

RRP: £75

- ❄️ THERMAL INSULATING
- ⊗ ANTI-BACTERIAL
- 🛋️ SOFT BRUSHED INTERIOR
- 🧶 'BARELY THERE' SEAM SYSTEM
- 🌀 BREATHABLE
- 🔄 4-WAY STRETCH
- 🛡️ DURABLE
- 🧺 MACHINE WASHABLE
- ☁️ LIGHTWEIGHT
- 🌊 ANTI-WRINKLE



NEW ZEALAND LEGGINGS

SKU: NZWW

MATERIAL: 85% PL, 15% EA

FABRIC WEIGHT: WINTER WEIGHT

SIZES: XS-XXL

RRP: £75

- ❄️ THERMAL INSULATING
- ⊗ ANTI-BACTERIAL
- 🛋️ SOFT BRUSHED INTERIOR
- 🧶 'BARELY THERE' SEAM SYSTEM
- 🌀 BREATHABLE
- 🔄 4-WAY STRETCH
- 🛡️ DURABLE
- 🧺 MACHINE WASHABLE
- ☁️ LIGHTWEIGHT
- 🌊 ANTI-WRINKLE

CONTACT INFO:

HENRIETTA@HHOLDERNESS.COM | +44 (0) 7767753824

BASE-LAYER LEGGINGS



ROSE LEGGINGS

SKU: ROSE
MATERIAL: 87% PL, 13% EA
FABRIC WEIGHT: SPRING WEIGHT
SIZES: XS-XXL
RRP: £62

-  THERMAL INSULATING
-  'BARELY THERE' SEAM SYSTEM
-  BREATHABLE
-  4-WAY STRETCH
-  DURABLE
-  MACHINE WASHABLE
-  LIGHTWEIGHT
-  ANTI-WRINKLE



NEW ZEALAND LEGGINGS

SKU: NZSW
MATERIAL: 87% PL, 13% EA
FABRIC WEIGHT: SPRING WEIGHT
SIZES: XS-XXL
RRP: £62

-  THERMAL INSULATING
-  'BARELY THERE' SEAM SYSTEM
-  BREATHABLE
-  4-WAY STRETCH
-  DURABLE
-  MACHINE WASHABLE
-  LIGHTWEIGHT
-  ANTI-WRINKLE

CONTACT INFO:

HENRIETTA@HHOLDERNESS.COM | +44 (0) 7767753824

BASE-LAYER LEGGINGS



SNOW LEOPARD LEGGINGS

SKU: SNOW
MATERIAL: 87% PL, 13% EA
FABRIC WEIGHT: SPRING WEIGHT
SIZES: XS-XXL
RRP: £62

- ❄️ THERMAL INSULATING
- 🌀 'BARELY THERE' SEAM SYSTEM
- 🌀 BREATHABLE
- 🔄 4-WAY STRETCH
- 🛡️ DURABLE
- 🧺 MACHINE WASHABLE
- ☁️ LIGHTWEIGHT
- 🌊 ANTI-WRINKLE



LYNX LEGGINGS

SKU: LYNX
MATERIAL: 87% PL, 13% EA
FABRIC WEIGHT: SPRING WEIGHT
SIZES: XS-XXL
RRP: £62

- ❄️ THERMAL INSULATING
- 🌀 'BARELY THERE' SEAM SYSTEM
- 🌀 BREATHABLE
- 🔄 4-WAY STRETCH
- 🛡️ DURABLE
- 🧺 MACHINE WASHABLE
- ☁️ LIGHTWEIGHT
- 🌊 ANTI-WRINKLE



PAPILLON LEGGINGS

SKU: PAPI
MATERIAL: 87% PL, 13% EA
FABRIC WEIGHT: SPRING WEIGHT
SIZES: XS-XXL
RRP: £62

- ❄️ THERMAL INSULATING
- 🌀 'BARELY THERE' SEAM SYSTEM
- 🌀 BREATHABLE
- 🔄 4-WAY STRETCH
- 🛡️ DURABLE
- 🧺 MACHINE WASHABLE
- ☁️ LIGHTWEIGHT
- 🌊 ANTI-WRINKLE

CONTACT INFO:

HENRIETTA@HHOLDERNESS.COM | +44 (0) 7767753824

OUR TECH SPEC

-  THERMAL INSULATING
-  ANTI-BACTERIAL
-  SOFT-BRUSHED INTERIOR
-  BREATHABLE
-  4-WAY STRETCH
-  'BARELY THERE' SEAM SYSTEM
-  DURABLE
-  LIGHTWEIGHT
-  EASY TO WASH
-  ANTI-WRINKLE



WINTER WEIGHT



SPRING WEIGHT

- THERMAL INSULATING 
- BREATHABLE 
- 4-WAY STRETCH 
- DURABLE 
- 'BARELY THERE' SEAM SYSTEM 
- LIGHTWEIGHT 
- EASY TO WASH 
- ANTI-WRINKLE 

CONTACT INFO:

HENRIETTA@HHOLDERNESS.COM | +44 (0) 7767753824

TESTIMONIALS

"I LOVE MY H.HOLDERNESS THERMALS. I HAVE BEEN LIVING IN THEM THIS SEASON. I'M ON THE MOUNTAIN EVERY DAY AND LIVE IN LEGGINGS - THESE ARE AMAZING AND I WEAR THE SAME PAIR AS LONG AS I CAN BEFORE I NEED TO WASH THEM. SOFT, WARM, AND CUTE TO BOOT"

MEGAN HARROD, ALPINE COMMUNICATIONS MANAGER (U.S. SKI AND SNOWBOARD ASSOCIATION)

"THE GLACER WINTER WEIGHT LEGGINGS WERE ABSOLUTELY IDEAL FOR THE WEEKEND, WITHSTANDING COLD TEMPERATURES UNDER MY TOURING PANTS WHICH ARE SHELL. I WENT SKI TOURING IN THEM AND SKIING - INCLUDING LONG, COLD CHAIR LIFTS (I GET FREEZING) AND THEY PERFORMED BRILLIANTLY."

ABI BUTCHER (FREELANCE WINTER SPORTS JOURNALIST)

"I HAVE BEEN IN ANTARCTICA WITH CLIENTS AND THESE LEGGINGS ARE AMAZING, ABSOLUTELY GREAT AND SUPER EFFECTIVE IN ANTARCTICA. I WORE THEM LOADS!"

ROBYN WOODHEAD (DIRECTOR OF WHITE DESERT)

AS SEEN IN



CONTACT INFO:

HENRIETTA@HHOLDERNESS.COM | +44 (0) 7767753824



CONTACT INFO:

HENRIETTA@HHOLDERNESS.COM | +44 (0) 7767753824